

## JANUARY HOLIDAYS

Monday 7 January  
10am-4pm

Bike Riding Perth City  
\$30



Tuesday 8 January  
10am-4pm

Swan Valley Cuddly  
Animal Farm  
\$25



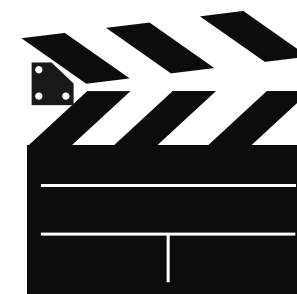
Wednesday 9 January  
10am-4pm

Board Games Day  
and BBQ  
\$15



Thursday 10 January  
10am-4pm

Movies  
\$20



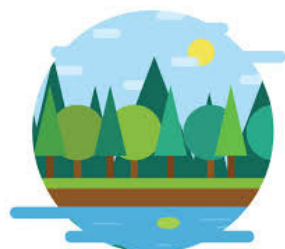
Friday 11 January  
10am-4pm

Music Rocks Session  
\$35



Monday 14 January  
10am-4pm

Whistlepipe Gully Bush  
Walk  
\$15



Tuesday 15 January  
10am-4pm

Mini Golf  
\$25



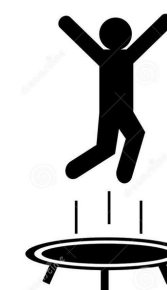
Wednesday 16 January  
10am-4pm

Cottesloe Beach  
\$20



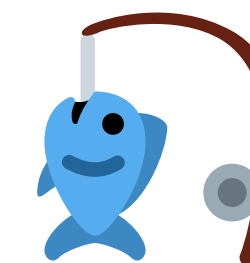
Thursday 17 January  
10am-4pm

Bounce Cannington  
\$30



Friday 18 January  
10am-4pm

Fishing at Freo Harbour  
\$20



# TEENSPIRIT MADDINGTON

## JANUARY HOLIDAYS

Monday 21 January  
10am-4pm

Whiteman Park -  
Activity TBC

\$30



Tuesday 22 January  
10am-4pm

Lawn Bowls

\$20



Wednesday 23 January  
10am-4pm

Kayaking/SUP

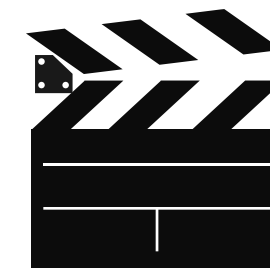
\$30



Thursday 24 January  
10am-4pm

Movies

\$20



Friday 25 January  
10am-4pm

Aus Day Decorations  
and Celebrations

\$15



Monday 28 January

No activity - public  
holiday

Tuesday 29 January  
10am-4pm

Cockburn ARC

\$30



Wednesday 30 January  
10am-4pm

Sports day and BBQ

\$15



Thursday 31 January  
10am-4pm

Perth Zoo

\$35



Friday 1 February  
6-9pm

Kenwick Social -  
Valentines

\$10



# TEENSPIRIT MADDINGTON

## BOOKING FORM



|                          |  |
|--------------------------|--|
| Individual Name:         |  |
| Contact Name and Number: |  |
| Dietary Requirements:    |  |
| Additional Comments:     |  |

| Date             | Activity          | Contribution | Booking |
|------------------|-------------------|--------------|---------|
| WEEK ONE         |                   |              |         |
| Mon 7 January    | Bike Riding       | \$30         |         |
| Tues 8 January   | Swan Valley       | \$25         |         |
| Wed 9 January    | Board Games       | \$15         |         |
| Thurs 10 January | Movies            | \$20         |         |
| Fri 11 January   | Music Rocks       | \$35         |         |
| WEEK TWO         |                   |              |         |
| Mon 14 January   | Whistlepipe Gully | \$15         |         |
| Tues 15 January  | Mini Golf         | \$25         |         |
| Wed 16 January   | Beach day         | \$20         |         |
| Thurs 17 January | Bounce            | \$30         |         |
| Fri 18 January   | Fishing           | \$20         |         |

| Date             | Activity                     | Contribution | Booking |
|------------------|------------------------------|--------------|---------|
| WEEK THREE       |                              |              |         |
| Mon 21 January   | Whiteman Park                | \$30         |         |
| Tues 22 January  | Lawn Bowls                   | \$20         |         |
| Wed 23 January   | Kayaking/SUP                 | \$30         |         |
| Thurs 24 January | Movies                       | \$20         |         |
| Fri 25 January   | Aus Day                      | \$15         |         |
| WEEK FOUR        |                              |              |         |
| Mon 28 January   | No activity - Public Holiday |              |         |
| Tues 29 January  | Cockburn ARC                 | \$30         |         |
| Wed 30 January   | Sports day                   | \$15         |         |
| Thurs 31 January | Perth Zoo                    | \$35         |         |
| Fri 1 February   | Kenwick Social               | \$10         |         |

Please complete the booking form by marking which activities you would like to book in to. Confirmations will be sent after the closing date. Return the form to [groups@directions.asn.au](mailto:groups@directions.asn.au) or mail PO Box 443, Maddington, 6989, WA no later than Friday 30 November 2018.

Additional information including location will be provided upon booking. If you have any queries regarding specific activities please contact us by email or phone (08) 92624900.

The stated contribution covers activity cost and food. Additional expenses e.g. souvenirs, drinks are to be covered by the individual.  
Companion cards and Smart Riders are required for the majority of activities.