



2025



CANNINGTON
COMMUNITY EDUCATION
SUPPORT CENTRE
LEARNING FOR LIFE

Achievement Independence Respect

Website: www.canningtonesc.wa.edu.au

Welcome to Cannington Community Education Support Centre

(As at 17 February 2025)

I would like to extend a warm welcome to you on behalf of Cannington Community Education Support Centre (CCESC), a secondary school that caters for over 120 students. Students in years 7-10 attend the Middle School site (located at Cannington Community College) and students in years 11 and 12 attend the Senior School site (located at Sevenoaks Senior College). CCESC is part of the broader Cannington Education precinct, located near Cannington train station.

As an Independent Public School, we provide an authentic curriculum tailored to the needs and aspirations of each student and foster partnerships with the broader community to ensure our students leave school well placed for the future. We pride ourselves on our dedicated team of exceptional teachers, education assistants and support staff.

I hope you find the information contained within to be helpful and informative as you consider your child's educational needs. Please feel free to arrange an appointment if you require any other information.

Andrew Wilson
Principal (B.Psych,M.Ed)

We are here to help!



Andrew Wilson
Principal



Angela Whittington
Deputy Principal
(Senior)



Cathy Houden
Deputy Principal
(Middle)

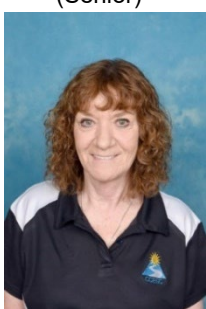


Glenda Reid
Lead Education
Assistant

Cathy Archer
Lead Education
Assistant



Tanya Buchan
Manager of Corporate
Services (MCS)



Sue Graham
Corporate Services
Officer (Middle)



Lisa Benstead
Corporate Services
Officer (Senior)



Angela McKennay
Corporate Services
Officer



Justin van der Westhuizen
Chaplain



Terri Te Kani
Student Services Mgr



Dwayne Griffin
Student Services



Table of Contents

the boodja, bilya (rivers), ngamma (waterholes) and karda (hills) and we pay our respects to their Elders past and present and emerging.

Contents

Aboriginal and Islander Education Officer (AIEO) .	5
Assemblies	5
Attendance.....	5
Breakfast club	5
Bus service	5
CANDO Fresh Food	5
Canteen	6
Chaplain.....	6
Companion card	6
Communication with teachers	6
Connect – Parent.....	6
Curriculum	6
Email address	6
Enrolments.....	7
Excursions	7
Health Care / Medications	7
Illness.....	7
Infectious diseases	7
Finance	7
Late for School.....	8
Leaving the school grounds during the day.....	8
Library	8
Media	8
P&C Association	8
Parking.....	9
Policies.....	9
Positive Behaviour Support	9
Postal address	10
Psychologist.....	10
Public Holidays 2025	10
Recess and lunchtime activities	10
Reporting	10
Regional Education Office	10
School Hours/Office Hours	11
School Business Plan 2019-2022.....	3
School Partnerships.....	4
Staffing.....	11
Stationery Lists	12
Student Free Days 2025.....	12
Student Support.....	12
Term Dates 2025	12
Therapy.....	12
Travel Training.....	12
Uniforms.....	0
Unique Student Identifier (USI).....	10
Valuables	10
Values	10
Workplace Learning.....	10



School Bus Services



Students enjoying D&T



Workplace Learning

In the spirit of reconciliation, we acknowledge and respect the Wadjuk Noongar people, the traditional custodians of the boodja (land) on which we work and live – Djarlgarro Beelieer. We recognise their continuing connection to



Aboriginal and Islander Education Officer (AIEO)

The school has the services of an AIEO, Mr Norm Gardner, for two days a week. Currently he works with the student services team and liaises with our families. Aboriginal Studies is a key part of our curriculum. You can contact Mr Gardner for an appointment.

Assemblies

A whole school assembly occurs at the end of each term, usually last week of term, Monday 11.30am – 1pm, SSC gym. Please refer to the school calendar or newsletter for the dates, times and location.

Parents are welcome to attend the assemblies and celebrate the students' achievements for the term with the school community.

Attendance

Students are required by the School Education Act 1999 to attend school every day that the school is open. If a student is absent, a legal guardian is required to notify the school of the reason for the student's absence as soon as possible either in writing or as follows:

Middle School ☎ 9351 2480
Senior School ☎ 6235 7296
SMS 0437 808 340

A medical certificate is required for two (2) consecutive days of absence.

Breakfast club

Breakfast Club is organised by the school chaplain and is available at both sites. It offers students the opportunity to have a chat, with healthy food to eat, before starting the school day. Please remember that students should NOT arrive at school earlier than 8:15am as there is no staff supervision before this time. The Club is free and proudly supported by Foodbank.

Bus service – Student Transport to and from school

The school has five buses currently serving the school which are run by the Public Transport Authority, (School Bus Services).

Parents/carers wishing to apply for transport assistance, especially bus access, should log on to the following website:

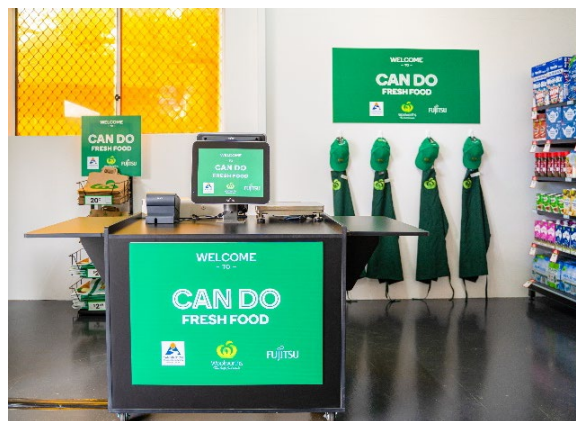
www.schoolbuses.wa.gov.au

Parents need to re-apply at the end of year 10, for students going into Year 11, and changing sites. An application can take more than 10 business days to process, in which time, your child will not have a seat on the bus.

If you need help with your application, please make an appointment with Mrs Sue Graham on ☎ 9351 2480

The school has its own Toyota Hiace, as well as access to a larger 24-seater Fuso bus used for school excursions and Workplace Learning only.

CANDO Fresh Food



CCESC is the first school in Western Australia to have a mini-Woolies store. It is situated at our Senior school. CANDO Fresh Food is a mini supermarket replicating the Woolworths retail experience with baskets for fresh food, supermarket shelves, a fully operational checkout and genuine Woolies uniforms. Students will gain valuable retail experience using fully operational Fujitsu registers; students will learn customer service skills, scan grocery items, handle money and process sales in a comfortable environment. Staff and students have been trained to use the registers by employees from the local Cannington Woolworths store.



PARENT CAREGIVER HANDBOOK



Canteen

The **Middle School** canteen is open Monday to Friday, before school, at recess and lunch. It is run by the P&C who are always looking for volunteers. We are a healthy eating school and following the Healthy Food and Drink School Guidelines. The menu is available and orders can be made online at www.myschoolconnect.com.au/canningtoncc

The **Sevenoaks Café** operates between 8:00am and 2:00pm Monday to Friday. During Term 4 the Café is open to the end of Week 6.

CCEC supports a healthy lifestyle and healthy eating habits for students. Parents/caregivers are encouraged to provide balanced, healthy snacks and lunches. We discourage lollies, potato chips, packaged snacks, and drinks high in sugar and caffeine.

Students are encouraged to eat fruit or vegetables and drink water during the day to assist with physical and mental performance and concentration. Every student has their own school drink bottle.

Chaplain

The school has funded a full-time chaplain via Youth Care. The chaplain, Mr Justin van der Westhuizen, provides pastoral care support to staff and students, and is not affiliated with any particular church. Mr van der Westhuizen is heavily involved in our student services program and attends camps and school functions.

Companion card

Students may be eligible for a companion card. The companion card is for people with a significant and permanent disability, who require attendant care support to participate at community venues and activities and will always need a high level of care to get to community-based activities. These cards are particularly useful when staff accompany students on excursions as it provides free tickets. For further information, telephone the companion card information line on Free call 1800 617 337 or www.wacompanioncard.org.au

Communication with teachers

The school utilises person centred planning principles when developing student plans. We encourage parents/carers to maintain an active role in the development of these plans and the ongoing education of their child. Teachers are available to discuss your child's progress throughout the term. To schedule a meeting with a teacher, please

contact the school office. Each class has a CONNECT page for easy email access.

Middle School ☎ 9351 2480
Senior School ☎ 6235 7296

Connect – Parent

The school uses Connect to correspond with parents through My Space, and each class has a Connect Flexi class to notify and inform parents of what is happening in their child's class. Student reports, IEPs/ITPs and Assessment Plans are also sent to parents via Connect. Please contact the school office if you do not have a parent Connect login, or if you are having issues accessing Connect.



Step by Step Guide
for Parents (2).pdf

Connect User Guide

Curriculum

CCEC is a well-resourced, specialist secondary school that offers students a range of exciting programs that cater to the individual students' interests, strengths and needs. General capabilities are an integral part of the Australian Curriculum through a focus on Literacy, Numeracy, Information and Communication Technology (ICT) and Personal and Social Capability.

We run the School Curriculum and Standards Authority (SCSA) courses including Preliminary courses in English, Mathematics, Health and Physical Outdoor Education, Business Management and Enterprise and Food Science.

We also deliver endorsed programs in ASDAN, Duke of Edinburgh Award, Department of Fire and Emergency Services Cadets, Coaching Young People for Success, and Workplace Learning.

In the senior school, students have the opportunity to engage in Vocational Education and Training courses (VET) which are delivered at school as a certificate-based course or as part of a School Based Traineeship linked to the Workplace Learning program. We deliver Certificate I in Agrifoods, Tradestart and Visual Arts - Woodwork.

Email address

Cannington.esc@education.wa.edu.au

Emergency contact information

It is essential parents/carers provide emergency contact numbers and notify the school immediately of any changes to phone numbers, etc.



Enrolments

Students must meet Department of Education criteria for enrolment at our school. The principal is happy to discuss your child's needs and whether he or she may be eligible to enrol, as well as explaining the process. **A request for approval for enrolment in an education support facility form** will need to be completed.

Excursions

Students often attend excursions/camps outside the school grounds to further develop transferring of skills taught in the classroom. This greatly assists in the students' transition from school to the broader community, promoting 'lifelong learning'.

CCESC uses Consent2Go for all excursions. Students receive an excursion invitation via parent email. Parents then approve as attending (and complete necessary medical information), or not attending. Paper copy is also available, if required.

Senior school years 11 – 12, excursions/camps are mostly subsidised in part/or full, by CCESC. **However, subsidy only applies if school fees have been paid in full, by the end of Term 1, or a payment plan has been approved with regular payments being made. If fees are still outstanding, parents will be required to cover the full cost of the excursion/camp.**

Please contact our office on 9351 2480 / 6235 7296 if you require additional information.

Health Care / Medications

Medical information is collected via the school student health care summary, which is completed when the student is enrolling at the school and updated yearly. This information is used by staff to create the student's health care plan. Common health plans include but are not limited to, asthma, diabetes, anaphylaxis, epilepsy and allergies. As a requirement of attending school camps and some excursions, medical information is requested for use by the supervising staff. Forms are distributed as required.

Any change in the medical condition of a student must be documented and given to the school.

The medication instruction form needs to be signed by the prescribing doctor.

If a student requires medication administered at camp, then the school requires a form signed by the prescribing Doctor.

All medication must be in a blister pack.

Illness

Accidents or illness: Students who feel unwell should report to the class teacher. They will then be directed to the school office where the parent/carer will be contacted to take the child home.

The middle school community nurse, Ms Amy Myles, is available Mondays to Thursdays, to assist and provide advice, but is not able to treat students or provide first aid. Ms Myles can be contacted on 9351 2480.

The senior school community nurse, Ms Vanessa Castel is available Monday & Tuesday. She can be contacted on 6235 7224.

The school does not have ambulance cover – this is a parental responsibility.

Infectious diseases

The following diseases require exclusion from school: chickenpox, head lice, influenza, measles, mumps, ringworm, rubella, school sores and trachoma. You can check with the school for the length of exclusion and, if in doubt, consult your medical practitioner.

Finance

CCESC is mainly funded through the Student-Centred Funding System and is also supplemented with additional funding from a variety of other sources such as P&C donations, government grants, school fees and voluntary contributions.

If you are currently the holder of a Pension Card, or Healthcare Card, please contact the office/Business Centre in term 1 prior to making payment, as you may be eligible for the Secondary Assistance Scheme.

2025

Voluntary Contributions years 7-10 \$285

(This includes levies as follows):

- P&C \$20
- Library \$15
- Technology \$15

Fees years 11-12

\$235

School fees are compulsory for students in years 11 and 12.

Payments can be made at the CCESC Middle School Reception and Senior School Business Centre by EFTPOS, and cash, via BPoint through the link on the website (Payments tab) and direct into our bank account.

BSB: 066-040

A/C # 19906619

Ref: Student name/reason.



Please also be aware that if Senior school years 11 – 12 fees have not been paid in full by end of term 1, or a payment plan been approved, then excursion subsidy does not apply, and parents will be required to cover the full cost of any excursions/camps, until fees have been paid in full.

Payments for excursions /camps can be made via BPoint on Consent2Go.

SECONDARY ASSISTANCE SCHEME

The Western Australian Department of Education provides an allowance to assist eligible families with secondary school costs.

Parents/guardians must apply for the Secondary Assistance Scheme each year (annually). Applications do not carry forward to future years.

To be eligible for the allowance, the **parent/guardian** must hold a Department of Human Services (Centrelink) or Veterans' Affairs card that represents a statement of income for the family (not in the student's name).

The allowance consists of two components:

- \$235 Educational Program Allowance paid directly to the school.
- \$300 Clothing Allowance paid directly to the parent/guardian or the school.

Application is made, each year, by the parent/guardian for student(s) enrolled in years 7-12 studying a full-time secondary course at a Western Australian public school. **Students born in 2006 or before, are not eligible. Applications for secondary assistance close at the end of Term 1, on Friday 11 April 2025.**

Late for School

Students arriving late for school must sign in at the office/Business Centre upon arrival at school, **(parents are not to walk students to class, unless otherwise arranged and approved by Admin)**, using the iPad / Passtab / Student / Late Arrival. They will receive a yellow sticker label to give to their teacher on arrival in class. Students must be at the middle school site by 8:40am and at the senior school site by 8:50am.

Senior school – Boom gates have been installed. Gates are open before 8.50am every day. They are closed from 8.50am – 2.30pm (Mon, Tues, Thurs, Fri), and 8.50am-2.15pm (Wed). Open between 2.30 – 3.05pm (M,T,Th,F) Open 2.15 – 2.45pm (W)

If you arrive between these times, then you must phone the Business Centre on 08 6235 7296 for access into the College.

Leaving the school grounds during the day

Students cannot leave school during the day without permission from the principal, deputy principals or student services manager, or a permission letter from the parent/carer.

Students must report to the office to sign out, using the iPad / Passtab / Student / Early Leaver, and receive a leave pass (Independent travel) or be collected by a parent/carer.

Parents must NOT go directly to classes or wander around the school site.

Library

The middle school library is open for student use every day. Students may use the computers at recess and lunchtime from Monday to Thursday and lunchtime on Friday.

The Sevenoaks library hours are: Monday, Tuesday, Wednesday and Thursday 8:00am-4:00pm, Friday 8:00am-3:00pm.

All library rules and procedures must be followed.

Media

Facebook	Cannington Community Education Support Centre
Instagram	Cannington Community ESC
Website	www.canningtonesc.wa.edu.au

P&C Association

CCESC and CCC have a joint P&C Association. Committee meetings are held in the Cannington Community College Library, 147 Wharf Street, Cannington at 1.30pm on Wednesday of weeks 4 and 8 every term. All parents of middle school students are welcome to attend. The contribution of the P&C is significant as it runs the school canteen and organises fundraisers and social functions throughout the school year.

Volunteers are sought after and highly valued. If you would like to participate in the schools' P&C, please register your interest with our school office. Our senior school does not currently have a P&C Association.



Parking

To ensure the safety of students, parents and carers, please follow the below procedures:

Middle school: All drop off and pick up to be done using the large car park located to the left of the school building.

Do not drop off students in the front car park.

Senior school: Boom gates have been installed at the Sevenoaks campus. Parents must phone the Business Centre on 08 6235 7296, for access outside of normal school hours. The north gate is only open in the morning until 8.45am so parents should enter the school via Cecil Avenue and turn left at the traffic lights onto Sevenoaks Street, to turn left into SSC, and left into the long carpark, near the Business Centre. The boom gates will be closed between 8.50am – 2.50pm (Monday, Tuesday, Thursday, Friday) and 8.50am – 2.15pm (Wednesday). A CCECSC visitor parking permit can be obtained from Lisa Benstead, for regular visitors to the school.

Policies

CCECSC fosters a safe and supportive environment for all. It is fully compliant with all Department of Education policies. A full list is available, but the three that need to be signed off on are:

Student Mobile Phone Policy:

Department of Education

OFF AND AWAY

All day

Turn off your mobile phone and put it away during the school day.

- Switch your smart watch to flight mode.
- Put away headphones and earbuds.
- If you need to speak with your family please come to the school administration.
- Only use it when a teacher says you can.

We collect and store the students' mobile phones securely throughout the day.

Internet Policy: All students and parents/carers sign an online agreement permission form in line with the Department of Education Student Online Services Guidelines. We have filters, and students found deliberately breaking the rules will face bans.

Dress Code Policy: Students are expected to wear the school uniform and to dress appropriately for the weather conditions or activities undertaken. Certain programs, such as cooking and design and technology, require footwear to be closed in.

Positive Behaviour Support

The purpose of positive behaviour support at CCECSC is to create and maintain a safe and supportive learning environment for all. We encourage positive attitudes through the explicit teaching and modelling of our core values, **achievement, independence, and respect.**

We aim to:

- Foster achievement, independence, and respect.
- Encourage the pursuit of personal goals.
- Support academic achievement.
- Promote social and civic responsibility.
- Maintain cultural harmony.
- Develop self-regulation, resilience and personal responsibility.

The school's positive behaviour support initiative includes strategies to:

- Maintain a positive school environment.
- Encourage positive behaviours and personal best.
- Have students take personal responsibility for their actions.





Postal address

Please address **all** correspondence for CCESC to:

Cannington Community Education Support Centre
147 Wharf Street
CANNINGTON WA 6107

Psychologist

The school receives the services of a school psychologist, Mrs Tracey Creighton, for two days per week (Tuesday & Wednesday). Much of Mrs Creighton's time is spent assessing students' eligibility; however, she is available to discuss behaviour or mental health issues and can be contacted on 9351 2480.

Public Holidays 2025

New Year's Day	Wednesday 1 January
Australia Day	Sunday 26 January
Australia Day holiday	Monday 27 January
Labour Day	Monday 3 March
Good Friday	Friday 18 April
Easter Monday	Monday 21 April
ANZAC Day holiday	Friday 25 April
Western Australia Day	Monday 2 June
King's Birthday holiday	Monday 29 September
Christmas Day	Thursday 25 December
Boxing Day	Friday 26 December

Recess and lunchtime activities

Middle school: To help improve students' social skills and general engagement at school, staff supervise recreational programmes. The community nurse runs a girls' club on a weekly basis.

Senior school: The gym at SSC is open at lunchtime for students to play ball games, including soccer and basketball. Students gather in friendship groups at various locations around the campus, including the café and under the gazebos. Every day, students have the choice to participate in a lunchtime activity, where conversation, music and fun activities are on offer. On Mondays, the school nurse runs a special 'health group' where students can make positive connections with a medical professional and ask questions relating to their health in a relaxed and supported environment.

Reporting

Staff collect data relevant to the individual student's needs and use this data to create an Individual Education Plan (IEP). Standardised testing in Literacy and Numeracy also informs the IEPs. Education Planning Meetings are held for parents and carers of years 7-9 students at the beginning of each semester. Parents of students in years 10-12 attend Individual Transition Plan (ITP) sessions twice per year (Term 1 and Term 3). Reports are sent out electronically via CONNECT to parent emails.

Reporting nights are held at least twice a year, where staff are available to discuss student progress.

Regional Education Office

The school is part of the South Metropolitan Education Region. The Regional Office is at 184 Hampton Road, Beaconsfield ☎ 9336 9563.

School Board

The School Board membership consists of parents, community members and school staff, namely, Emma Blake (Chairperson / Parent), Jude Bridgland (Parent), Dr Paula Smith (Parent), Jenny Fuller (Community Member), Zena Gomes (Community Member), Eleanor Wilkins (Community Member), Mark Arrantash (Staff), Angela Whittington (Deputy Principal), Tanya Buchan (MCS), and Andrew Wilson (Principal). These dedicated volunteers assist in establishing the school's strategic plans. The Board verifies financial planning and approves the annual charges and contributions. If you are interested in being part of the School Board, please register your interest with our school office.



School Hours/Office Hours

SCHOOL HOURS

Middle School – Years 7-10

Mon, Tues, Thurs, Fri	Wednesday
Start	8:40am
Zone 1	8:40am – 9:55am
Zone 2	9:55am – 10:55am
Recess	
Zone 3	11:20am – 12:20pm
Zone 4	12:20pm – 1:20pm
Lunch	
Zone 5	1:50pm – 2:50pm

- Early finish on Wednesday – 2:35pm

Senior School – Years 11-12

Start	8:50am
Zone 2	8:50am – 9:50am
Zone 3	9:50am – 10:50am
Recess	
Zone 4	11:10am – 12:10pm
Zone 5	12:10pm – 1:10pm
Lunch	
Zone 6	1:40pm – 2:20pm
Zone 7	2:20pm – 2:50pm

- Early finish on Wednesday – 2:30pm

OFFICE HOURS

Middle School – Years 7-10

Cannington Community College Site

147 Wharf Street, Cannington

8:00am – 3:30pm Monday to Friday

Corporate Services Officer: Mrs Sue Graham

☎ 9351 2480

Senior School – Years 11-12

Sevenoaks Senior College Site

275 Sevenoaks Street, Cannington

8:00am – 3:30pm Monday to Friday

Corporate Services Officer: Mrs Lisa Benstead

☎ 6235 7296



Smartrider cards

Transperth SmartRider cards are distributed to new students at the beginning of each year.

Year 10 students transferring from middle to senior campus will continue to use their CCESC SmartRiders until they complete school.

The benefit of this is, on their Smartrider, students will still be listed as Cannington Community ESC (less confusing for parents and students) and have their current photo.

Please advise Mrs Graham when the SmartRider expires (when a student turns 18 or continues to Pathways for an SBT) so that an extension of the expiry date can be arranged through Transperth.

If a SmartRider card is lost, please see Mrs Graham at the middle school office to order a replacement card. Cost \$5.00 (photo included).

Staffing

Principal
 Deputy Principals (2)
 Manager of Corporate Services
 Corporate Services Officers (3)
 Student Services Manager
 Student Services Coordinator
 Workplace Learning Coordinators (2)
 Aboriginal and Islander Education Officer (AIEO)
 Chaplain
 Teaching Staff (21)
 Lead Education Assistants (2)
 Education Assistants (52)
 School Psychologist
 Speech Pathologist
 Occupational Therapist

A detailed list is available on our website.



Market Day

Seniors St John First Aid Incursion



Stationery Lists

We encourage all students to bring the items listed below to class at the start of the year. Please check at the beginning of each term that your child has these items.

Please have all items labelled with your child's name.

Middle School – Years 7-10

No	Item
5	Blue biros
5	Red biros
10	Lead pencils (HB)
1	Pack colour pencils
1	Pack colour textas
2	Glue sticks 35g
1	Scissors
1	30cm wooden ruler
2	White eraser
1	Pencil sharpener
4	Large boxes tissues
1	Large pencil case

Senior School – Years 11-12

No	Item
2	Lead pencils (HB)
1	White eraser
1	Pencil sharpener
6	Red biros
6	Blue biros
1	Scissors - large
1	30 cm wooden ruler
2	Glue sticks 35g
1	Packet colour pencils
1	Small packet textas
4	Large boxes tissues
1	Large pencil case

All students are to provide their toiletries (roll-on deodorant, soap, comb, sanitary products, etc) in a carry bag.

Student Free Days 2025

(School Development Days)

Term 1	Monday 3 February Tuesday 4 February
Term 2	Friday 30 May (Week 5)
Term 3	Monday 21 July
Term 4	Monday 13 October Friday 19 December

Student Support

We have a team of dedicated staff committed to providing support to students and families who are experiencing difficulties. The team is made up of the student services manager, the student services coordinator, chaplain, psychologist, nurse and other staff as required. They adopt a case management approach and look for community-based programs as well as helping students self-regulate their behaviour.

Term Dates 2025

Semester One	Term 1	Wednesday 5 February – Thursday 11 April
	Term 2	Monday 28 April – Friday 4 July
Semester Two	Term 3	Tuesday 22 July – Friday 26 September
	Term 4	Tuesday 14 October – Thursday 18 December

Therapy

The school purchases the services of an Occupational Therapist from Wize Therapy and Speech Pathologist from Super You Therapy. NDIS service providers come into the school to work with students and staff. Contact your child's teacher to discuss the best ways to incorporate therapy services into the school program.

The school has a purpose-built sensory room which is for the use of students with sensory needs, as identified by their therapy provider.

Travel Training

Independent students travel to and from school via Transperth bus or train. The school provides travel training education programs to assist students who wish to, and are capable of, travelling independently. Please contact the school if you would like your child to receive help with using public transport.

Uniforms

Years 7-10

Uniforms can only be purchased from Uniform Concepts, Willetton



CANNINGTON CC SHORT SLEEVE POLO



JUMPER CREW NECK



JACKET



MICRO FIBRE SHORTS



SKIRT WITH INBUILT SHORTS



MICRO FIBRE TRACKPANTS



FACTION POLO



CANNINGTON
COMMUNITY EDUCATION
SUPPORT CENTRE
LEARNING FOR LIFE



Uniform
Concepts

Cannington Community College

and

Cannington Community Education Support Centre

2025 UNIFORM PRICE LIST & ORDER FORM



CANNINGTON
COMMUNITY COLLEGE

Student Name:	
Year:	
Parent / Guardian Name:	
Phone Number - Mobile:	
E-mail Address:	

UNISEX UNIFORMS	3XS	2XS	S	M	L	XL	2XL	3XL	4XL	QTY	PRICE*	TOTAL \$
Short Sleeve Polo shirt											\$34.50	
Jumper - Crew neck											\$46.00	
Jacket - Microfibre											\$65.00	
Shorts - Microfibre											\$35.00	
Skirt - with inbuilt shorts											\$34.00	
Trackpants - Microfibre											\$39.00	
Faction Polo											\$34.50	
GRAND TOTAL												\$

* All prices are subject to change without notice ** A 50% surcharge will be added to all made to measure garments

PAYMENT TYPE:	\$	<input type="checkbox"/>	<input type="checkbox"/>	<input type="checkbox"/>	<input type="checkbox"/>	<input type="checkbox"/>	<input type="checkbox"/>	<input type="checkbox"/>	<input type="checkbox"/>	<input type="checkbox"/>	<input type="checkbox"/>	<input type="checkbox"/>	DINERS, AMEX & CHEQUES ARE NOT ACCEPTABLE
CARD NUMBER (16 DIGITS):													
EXPIRY DATE:													
CARD HOLDER FULL NAME:													
CARD HOLDER SIGNATURE:													
ADDRESS: 30 Kembra Way, Willetton, WA 6155 TEL: 9270 4669 EMAIL: willelton@uc.nellgray.com.au WEBSITE: nellgray.com.au													
OPEN: Mondays - Friday 9am - 5pm (Thursday 6pm) Saturday 9am - 1pm													



Years 11-12

Uniforms can only be purchased from Uniform Concepts, Willetton



UNIFORMCONCEPTS

Supplying Uniforms to Sevenoaks Senior College and Cannington Community Education Support Centre (Senior School)

Address: 30 Kembla Way, Willetton, WA 6155 **Tel:** 9270 4669

Email: willetton@uc.nellgray.com.au **Website:** nellgray.com.au

Open: Monday - Friday 9am - 5pm (Thursday 6pm) & Saturday 9am - 1pm

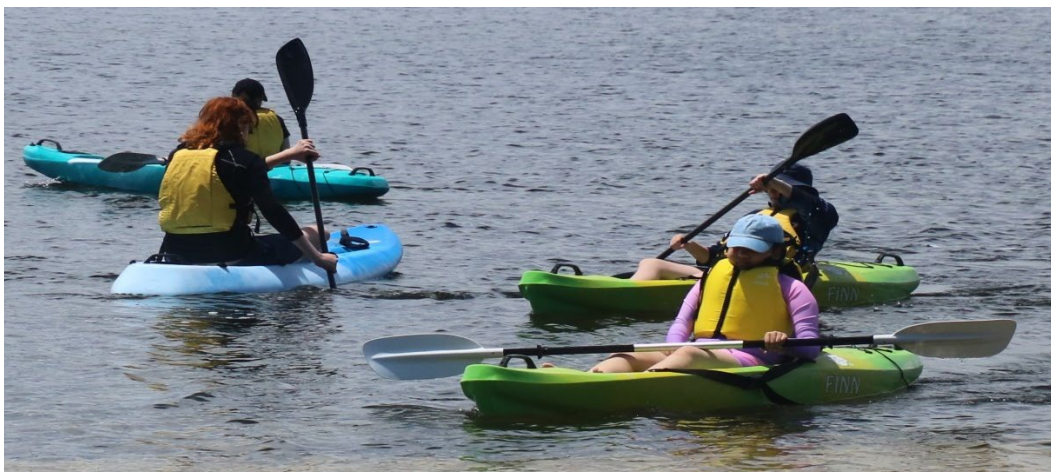
All Students

The College and Education Support Centre have an expectation that all students wear the uniform to include polo shirt, jacket or jumper. It is also a safety requirement to identify students on school grounds.

Footwear: Joggers or black shoes

Protective footwear is essential in some subjects.

- Students should bring a change of clothes for sport.
- Jewellery is to be kept to a minimum. Students may be required to remove jewellery where safety is an issue.
- For interschool activities, students will be advised about what they will need to wear.



Yr 10 Transition excursion



Unique Student Identifier (USI)

A USI is required for all students in years 10, 11 and 12. It is a combination of ten letters and numbers and is different for each student. A USI is required for all students undertaking nationally recognised training to receive a qualification or record of attainment. Students will generally apply for a USI in year 10.

Once a USI has been allocated, it cannot be changed and stays with the person for life.

A USI is free and easy to create using a birth certificate and/or Medicare card as identification and can be obtained from the USI registry or online at <http://www.usi.gov.au>



Athletics carnival

Valuables

Students must not bring valuable items to school. The school does not have lockers for students to use and cannot take responsibility for lost or misplaced items. Parents can contact the school if their child is bringing money to the school, and they are concerned. Lost property is kept in classrooms or the front office. Please ensure clothing and items are labelled with your child's name.

Values

At CCESC, we have identified **Achievement**, **Independence**, and **Respect** as our core values.

Achievement is about doing your best and being your best (work hard, and you can succeed) and recognising that we are all good at something.

Independence is about being responsible, taking control, setting goals, and doing it by yourself if you can.

Respect is about showing you care for yourself, your friends, your family, your community, your culture and your world. You treat others as you would like to be treated.

The motto **Learning for Life** reflects our belief that learning occurs throughout life and that our students require a specialised functional curriculum that prepares them for life.

CCESC and its partner schools, Cannington Community College, and Sevenoaks Senior College, aim to foster a cooperative and supportive learning environment that is inclusive and responsive to the needs of all students. The development of independence, a robust sense of self-worth and respect for others are key objectives for our students.

Workplace Learning

The Workplace Learning Program (WPL) begins in year 10 as Work Readiness, and then continues in year 11 and 12 as Authority Developed Workplace Learning (ADWPL). WPL is run on an individual student basis, and we endeavour to match students with an industry that holds their interest. Students are supported by a Job Coach, and are required to complete 55 hours, a logbook and skills journal, per placement, to achieve one unit, with a maximum of four units in two years. Students travel to work placements each week using public transport and are required to have their own Smartrider. While in the workplace students wear clothes other than school uniform, as they become part of the workforce, rather than school students. Parents receive documentation prior to each placement detailing all requirements.

CCESC Middle school is situated at Cannington Community College site –
147 Wharf Street, Cannington

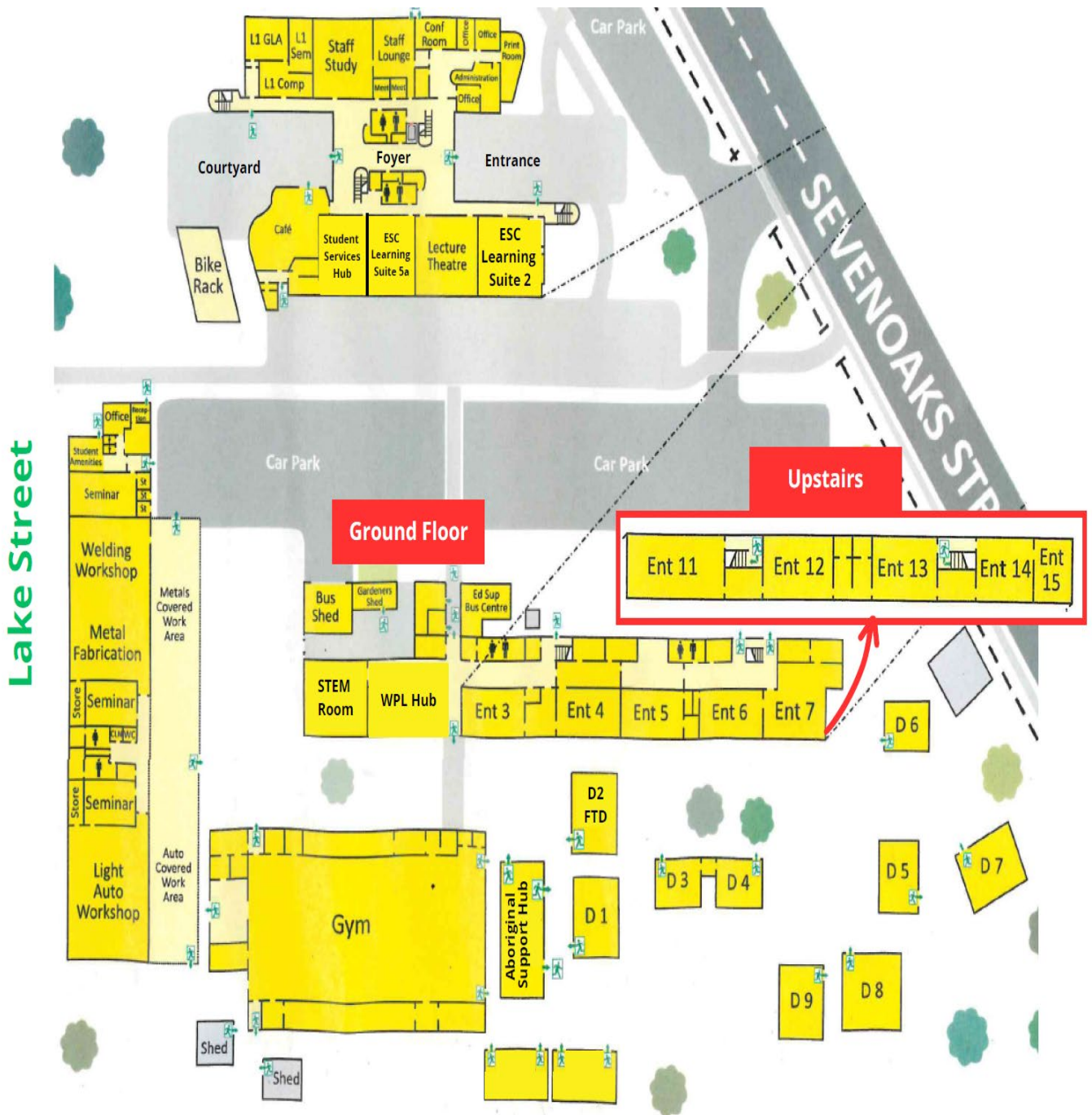


147 Wharf Street Cannington, WA 6107





CCESC Senior school is situated at the Sevenoaks Senior College site –
275 Sevenoaks Street, Cannington





Cannington Community Education Support Centre

Ethos: Our motto, Learning for Life, reflects our beliefs that learning occurs throughout life and that our students require a specialised curriculum that prepares them for life.

Our Vision

Empowering every student to reach their potential.

Our Purpose

To provide a range of programs for students with special needs that maximise their ability to independently take their place in the wider community by meeting their individual intellectual, social, emotional, sensory and physical needs.

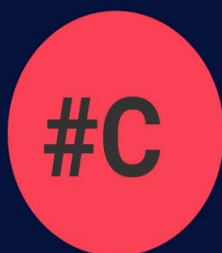
#CanDo

Our Core Values

Achievement
Independence
Respect

School Priorities

ACHIEVEMENT - INDEPENDENCE - RESPECT



Curriculum

Literacy
Numeracy
Personal and Social
Capabilities - Mental
Health and Wellbeing



Aboriginal Culture

Aboriginal
Cultural Standards
Framework



Networks

Parent and
Community
Partnerships
NDIS
Therapy
IEP's/RTP



Directions

Transition Plans
VET/WPL
Senior Curriculum
Pathways



Organisational

Governance
Finance Committee
School Board
KOWS
Performance
Management



School Partnerships

See our website for more...



[School Bus Services](#)



[Workpower](#)



[BIZLINK](#)



[MusicRocks Australia](#)