



2025



CANNINGTON
COMMUNITY EDUCATION
SUPPORT CENTRE
LEARNING FOR LIFE

Achievement Independence Respect

Website: www.canningtonesc.wa.edu.au

Welcome to Cannington Community Education Support Centre



PARENT CAREGIVER HANDBOOK



I would like to extend a warm welcome to you on behalf of Cannington Community Education Support Centre (CCESC), a secondary school that caters for over 120 students. Students in years 7-10 attend the Middle School site (located at Cannington Community College) and students in years 11 and 12 attend the Senior School site (located at Sevenoaks Senior College). CCESC is part of the broader Cannington Education precinct, located near Cannington train station.

As an Independent Public School, we provide an authentic curriculum tailored to the needs and aspirations of each student and foster partnerships with the broader community to ensure our students leave school well placed for the future. We pride ourselves on our dedicated team of exceptional teachers, education assistants and support staff.

I hope you find the information contained within to be helpful and informative as you consider your child's educational needs. Please feel free to arrange an appointment if you require any other information.

Andrew Wilson
Principal (B.Psych,M.Ed)

We are here to help!



Andrew Wilson
Principal



Angela Whittington
Deputy Principal
(Senior)



Cathy Houden
Deputy Principal
(Middle)



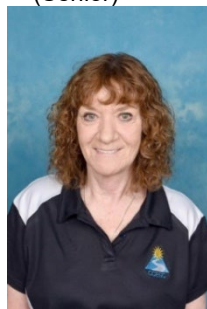
Glenda Reid
Lead Education
Assistant



Cathy Archer
Lead Education
Assistant



Tanya Buchan
Manager of Corporate
Services (MCS)



Sue Graham
Corporate Services
Officer (Middle)



Lisa Benstead
Corporate Services
Officer (Senior)



Angela McKennay
Corporate Services
Officer (Middle)



Carolyn Pears
Workplace Learning
Coordinator



Dwayne Griffin
Student Services
Manager



Terri Te Kani
Student Services
Coordinator



Justin van der Westhuizen
Chaplain



Tracey Creighton
School Psychologist



Table of Contents

Contents

Aboriginal and Islander Education Officer (AIEO)	4
Assemblies	4
Attendance	4
Breakfast club	4
Bus service	4
CANDO Fresh Food	4
Canteen	5
Chaplain	5
Companion card	5
Communication with teachers	5
Connect – Parent	5
Curriculum	5
Email address	5
Enrolments	6
Excursions	6
Finance	6
Secondary Assistance Scheme (SAS)	6
Health Care / Medications	7
Illness	7
Infectious diseases	7
Late for School	7
Leaving school grounds during the day (Student early leaver)	7
Library	8
Media	8
P&C Association	8
Parking	8
Policies	8
Positive Behaviour Support	9
Postal address	9
Psychologist	9
Public Holidays 2025	9
Recess and lunchtime activities	10
Reporting	10
Regional Education Office	10
School Hours/Office Hours	10
Staffing	11
Stationery Lists	11
Student Assistance Claim 2025	11
Student Free Days 2025	12
Student Support	12
Term Dates 2025	12
Therapy	12
Therapy - Student in-school sessions	12
Travel Training	12
Uniforms – Middle School	13
Uniforms – Senior School	14
Unique Student Identifier (USI)	15
Valuables	15
Values	15
Workplace Learning	15
Cannington Community College Site Map	16
Sevenoaks Senior College Site Map	17
School Business Plan 2019 - 2022	18
School Priorities	18
School Partnerships	19

In the spirit of reconciliation, we acknowledge and respect the Wadjuk Noongar people, the traditional custodians of the boodja (land) on which we work and live – Djarlgarro Beelier. We recognise their continuing connection to the boodja, bilya (rivers), ngamma (waterholes) and karda (hills) and we pay our respects to their Elders past and present and emerging.



School Bus Services



Students enjoying D&T



Workplace Learning



Aboriginal and Islander Education Officer (AIEO)

The school has the services of an AIEO, Mr Norm Gardner, for two days a week. Currently he works with the student services team and liaises with our families. Aboriginal Studies is a key part of our curriculum. Please contact the school if you would like more information.

Assemblies

A whole school assembly occurs usually on the last week of term, Monday 11.30am – 1pm, SSC gym. Please refer to the school calendar, newsletter, or Connect for the dates, times and location.

Parents are welcome to attend the assemblies and celebrate the students' achievements for the term with the school community.

As parking at the senior campus is limited, we suggest parking next door at the Cannington Leisureplex and walking to campus.

Attendance

Students are required by the School Education Act 1999 to attend school every day that the school is open. If a student is absent, a parent / legal guardian is required to **notify the school each day**, of the reason for the student's absence, either in writing or as follows:

Middle School ☎ 9351 2480
Senior School ☎ 6235 7296
SMS 0437 808 340

A medical certificate is required for two (2) consecutive days of absence.

Breakfast club

Breakfast Club is organised by the school chaplain and is available at both sites. It offers students the opportunity to have a chat, with healthy food to eat, before starting the school day. Please remember that students should NOT arrive at school earlier than 8:15am as there is no staff supervision before this time. The Club is free and proudly supported by Foodbank.

Bus service

There are five buses that transport to and from school, which are run by the Public Transport Authority, (School Bus Services).

Parents/carers wishing to apply for transport assistance, especially bus access, should log on to the following website:

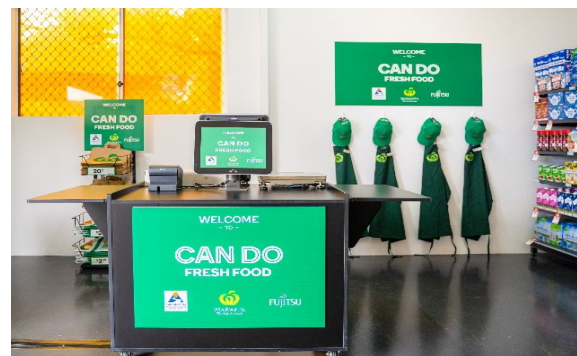
www.schoolbuses.wa.gov.au

Parents need to re-apply at the end of year 10, for students going into Year 11, and changing sites. You are also required to notify SBS if you move house, or change addresses, as your child may be on another bus, and SBS may require you to submit another application. An application can take more than 10 business days to process, in which time, your child will not have a seat on the bus.

If you need help with your application, please make an appointment with the school officer on ☎ 9351 2480

The school has its own Toyota Hiace bus as well as access to a larger 24-seater Fuso bus used for school excursions and Workplace Learning only.

CANDO Fresh Food



CCESC is the first school in Western Australia to have a mini-Woolies store. It is situated at our Senior school. CANDO Fresh Food is a mini supermarket replicating the Woolworths retail experience with baskets for fresh food, supermarket shelves, a fully operational checkout and genuine Woolies uniforms. Students will gain valuable retail experience using fully operational Fujitsu registers; students will learn customer service skills, scan grocery items, handle money and process sales in a comfortable environment. Staff and students have been trained to use the registers by employees from the local Cannington Woolworths store.



Canteen

The **Middle School** canteen is open Monday to Friday, before school, at recess and lunch. It is run by the P&C who are always looking for volunteers. We are a healthy eating school and following the Healthy Food and Drink School Guidelines. The menu is available, and orders can be made online at www.myschoolconnect.com.au/canningtoncc

The **Sevenoaks Café** operates between 8:00am and 2:00pm Monday to Friday. Lunches can be ordered in the morning, and purchases can be made by cash or EFTPOS. During Term 4, the Café is open to the end of Week 6, when the SSC yr 11 students finish.

CCESC supports a healthy lifestyle and healthy eating habits for students. Parents/caregivers are encouraged to provide balanced, healthy snacks and lunches. We discourage lollies, potato chips, packaged snacks, and drinks high in sugar and caffeine.

Students are encouraged to eat fruit or vegetables and drink water during the day, to assist with physical and mental performance and concentration. Every student has their own school drink bottle.

Chaplain

The school has funded a full-time chaplain via Youth Care. The chaplain, Mr Justin van der Westhuizen, provides pastoral care support to staff and students, and is not affiliated with any particular church. Mr van der Westhuizen is heavily involved in our student services program and attends camps and school functions.

Companion card

Students may be eligible for a companion card. The companion card is for people with a significant and permanent disability, who require attendant care support to participate at community venues and activities and will always need a high level of care to get to community-based activities. These cards are particularly useful when staff accompany students on excursions, and to Workplace Learning, as it provides a free ticket for staff. For further information, telephone the companion card information line on Free call 1800 617 337 or www.wacompanioncard.org.au

Communication with teachers

The school utilises person centred planning principles when developing student plans. We encourage parents/carers to maintain an active role in the development of these plans and the ongoing education of their child. Teachers are available to

discuss your child's progress throughout the term. To schedule a meeting with a teacher, please contact the school office. Each class has a CONNECT page for easy email access.

Middle School ☎ 9351 2480
Senior School ☎ 6235 7296

Connect – Parent

The school uses Connect to correspond with parents through My Space, and each class has a Connect Flexi class to notify and inform parents of what is happening in their child's class. Student reports, IEPs/ITPs and Assessment Plans are also sent to parents via Connect. Please contact the school office if you do not have a parent Connect login, or if you are having issues accessing Connect.



Step by Step Guide
for Parents (2).pdf

Connect User Guide

Curriculum

CCESC is a well-resourced, specialist secondary school that offers students a range of exciting programs that cater to the individual students' interests, strengths and needs. General capabilities are an integral part of the Australian Curriculum through a focus on Literacy, Numeracy, Information and Communication Technology (ICT) and Personal and Social Capability.

We run the School Curriculum and Standards Authority (SCSA) courses including Preliminary courses in English, Mathematics, Health and Physical Education, and Materials Design and Technology.

We also deliver a variety of endorsed programs, including but not limited to, ASDAN, Duke of Edinburgh Award, Department of Fire and Emergency Services (DFES) Cadets, Coaching Young People for Success, Keys for Life (Plus), and Workplace Learning.

In the senior school, students have the opportunity to engage in Vocational Education and Training (VET) courses, which are delivered at school as a certificate-based course, or as part of a School Based Traineeship (SBT) linked to the Workplace Learning program. We also deliver Certificate I in Horticulture, and Certificate I in Leadership.

Email address

Cannington.esc@education.wa.edu.au



Emergency contact information

It is essential parents/carers provide emergency contact numbers and notify the school immediately of any changes to phone numbers, etc.

Enrolments

Students must meet Department of Education criteria for enrolment at our school. The principal is happy to discuss your child's needs and whether he or she may be eligible to enrol, as well as explaining the process. **A request for approval for enrolment in an education support facility form** will need to be completed.

Excursions

Students often attend excursions/camps outside the school grounds to further develop transferring of skills taught in the classroom. This greatly assists in the students' transition from school to the broader community, promoting 'lifelong learning'.

CCESC uses Consent2Go for all excursions. Students receive an excursion invitation via parent email. Parents then approve as attending (you will then be required to update your child's parent/guardian contact details, and medical information on Consent 2 Go. Please also tick to the box to give permissions for staff to administer paracetamol and ibuprofen, if required) or not attending. A paper copy is also available, if parents do not have email.

Senior school years 11 – 12, excursions/camps are mostly subsidised in part/or full, by CCESC. **However, subsidy only applies if school fees have been paid in full, by the end of Term 1, or a payment plan has been approved with regular payments being made. If fees are still outstanding, parents will be required to cover the full cost of the excursion/camp.**

Please contact our office on 9351 2480 / 6235 7296 if you require additional information.

Finance

CCESC is mainly funded through the Student-Centred Funding System and is also supplemented with additional funding from a variety of other sources such as P&C donations, government grants, school fees and voluntary contributions.

If you are currently the holder of a Pension Card, or Healthcare Card, please contact the office/Business Centre in term 1 prior to making payment, as you may be eligible for the Secondary Assistance Scheme.

2025 Voluntary Contributions years 7-10 \$285
(This includes levies as follows):

- P & C \$20
- Library \$15
- Technology \$15

School fees are compulsory for students in years 11 and 12.

Compulsory Fees years 11-12 \$235

Payments can be made at the CCESC Middle School Reception and Senior School Business Centre by EFTPOS, phone payment, cash, via BPoint through the link on the website (Payments tab), and direct into our bank account.

BSB: 066-040
A/C # 19906619
Ref: Student name/reason.

Please also be aware that if Senior school years 11 – 12 fees have not been paid in full by end of term 1, or a payment plan been approved, then excursion subsidy does not apply, and parents will be required to cover the full cost of any excursions/camps, until fees have been paid in full.

Payments for excursions /camps can be made via BPoint on Consent2Go, EFTPOS, phone payment, direct deposit, and cash.

Secondary Assistance Scheme (SAS)

The Western Australian Department of Education provides an allowance to assist eligible families with secondary school costs.

Parents/guardians must apply for the Secondary Assistance Scheme each year (annually). Applications do not carry forward to future years.

To be eligible for the allowance, the **parent/guardian** must hold a Department of Human Services (Centrelink) or Veterans' Affairs card that represents a statement of income for the family (not in the student's name).

The allowance consists of two components:

- \$235 Educational Program Allowance paid directly to the school.
- \$300 Clothing Allowance paid directly to the parent/guardian or the school.

Application is made, each year, by the parent/guardian for student(s) enrolled in years 7-12 studying a full-time secondary course at a Western Australian public school. For 2025 applications, students born in 2006 or before, are not eligible.

Applications for secondary assistance close at the end of Term 1, on Friday 11 April 2025.



Health Care / Medications

Medical information is collected via the school student health care summary Form 1, which is completed when the student is enrolling at the school and MUST be updated yearly, or if there is a change to your child's medical condition. This information is used by staff to create the student's health care plan. Common health plans include but are not limited to, asthma, diabetes, anaphylaxis, epilepsy and allergies (mild and severe). These plans are to be completed by the reviewing doctor, with all relevant information, and given to school.

As a requirement of attending school camps and some excursions, medical information is requested for use by the supervising staff. Forms are distributed as required.

Any change in the medical condition of a student must be documented and given to the school.

The medication instruction form needs to be signed by the prescribing doctor.

If a student requires medication administered at school, or camp, then the school requires a form signed by the prescribing doctor.

All medication must be in a blister pack and clearly labelled with student name and dosage.

Illness

Accidents or illness: Students who feel unwell / or have had an accident where they have been injured, should report to the class teacher, or school staff. When approval has been given by Admin to phone home, classroom staff / school officer then contacts parents/carers. If the student is to go home, they will then be directed to the school office/Business Centre to wait to be picked up and signed out by parent/carer via the Passtab iPad. If the student cannot be picked up straight away, then they wait in the classroom until parent arrives, and then be taken to the office/Business Centre.

The school community nurse, Ms Amy Myles, is available Mondays to Thursdays, to assist and provide advice, but is not able to treat students or provide first aid. Ms Myles can be contacted on 9351 2480.

The senior school community nurse, Ms Vanessa Castel is available Monday & Tuesday. She can be contacted on 6235 7224.

Please do not send your child to school if they are unwell, as sickness spreads quickly through a classroom, to other students and staff.

The school does not have ambulance cover – this is a parental responsibility.

Infectious diseases

The following diseases require exclusion from school: chickenpox, head lice, influenza, measles, mumps, ringworm, rubella, school sores and trachoma. You can check with the school for the length of exclusion and, if in doubt, consult your medical practitioner.

Late for School

Students must be at the middle school site by 8:40am and at the senior school site by 8:50am.

Students arriving late for school must sign in at the office / Business Centre upon arrival at school, **(parents are not to walk students to class, unless otherwise arranged and approved by Admin)**, using the iPad / Passtab / Student / Late Arrival. They will receive a yellow sticker label to give to their teacher on arrival in class. The school officer will then contact the classroom to advise that the student has arrived, and is on their way to class, or needs to be walked to class by staff.

Senior school – The car parks are now staff only, unless otherwise approved, and boom gates have been installed at the entrance to the left and right car parks. Parents / Carers / support workers, unless otherwise approved, are to park at the Cannington Leisureplex for drop off / pickup, as previously advised by school.

If your child is late for school or has an appointment and needs to be picked up early, **then you must phone the Business Centre on 08 6235 7296 for access into the left-hand side carpark, and sign students in or out, as required.**

Leaving school grounds during the day (Student early leaver)

Students cannot leave school during the day without permission from the principal, deputy principals or student services manager, or a permission letter from the parent/carer.

Students must report to the office / Business Centre to sign out, using the iPad / Passtab / Student / Early Leaver, and receive a leave pass (Independent travel) or be collected by a parent/carer.

If a person other than a parent, or an approved contact, is going to collect your child/ren, please advise your child's teacher, or contact the office / Business Centre to advise.

Parents / support workers must NOT go directly to classes or wander around the school site.

Senior campus – ALL support workers must give current ID / Working with Children's card to school



officer, and come to the Business Centre, to sign the student out. They are not to wait in the carpark.

Library

The middle school library is open for student use every day. Students may use the computers at recess and lunchtime from Monday to Thursday and lunchtime on Friday.

The Sevenoaks library hours are:

Monday, Tuesday, Wednesday and Thursday 8:00am-4:00pm, Friday 8:00am-3:00pm.

All library rules and procedures must be followed.

Media

Facebook	Cannington Community Education Support Centre
Instagram	Cannington Community ESC
Website	www.canningtonesc.wa.edu.au

P&C Association

CCESC and CCC have a joint P&C Association. Committee meetings are held in the Cannington Community College Library, 147 Wharf Street, Cannington at 1.30pm on Wednesday of weeks 4 and 8 every term. All parents of middle school students are welcome to attend. The contribution of the P&C is significant as it runs the school canteen and organises fundraisers and social functions throughout the school year.

Volunteers are sought after and highly valued. If you would like to participate in the schools' P&C, please register your interest with our school office. Our senior school does not currently have a P&C Association.

Parking

To ensure the safety of students, parents and carers, please follow the below procedures:

Middle school: All drop off and pick up to be done using the large car park located to the left of the school building. **Do not drop off students in the front car park.**

Senior school: Boom gates have been installed at the Sevenoaks campus. Parents must phone the Business Centre on 08 6235 7296, for access outside of normal school hours. The north gate is now closed and there is no right turn into the College. Parents and visitors to the College should approach via Cecil Avenue and turn left at the traffic lights onto Sevenoaks Street, to turn left into SSC, and left into the long carpark, near the Business Centre. The boom gates will be closed between 8.50am – 2.50pm (Monday, Tuesday, Thursday, Friday) and 8.50am – 2.15pm (Wednesday). A CCESC visitor parking permit can be obtained from the Business Centre, for regular visitors to the school (therapists / support workers, and parents who have permission).

As the carparks are now mainly staff only, and parking is limited, parents, support workers, and therapists should park at the Cannington Leisureplex and walk to the Business Centre.

Policies

CCESC fosters a safe and supportive environment for all. It is fully compliant with all Department of Education policies. A full list is available, but the three that need to be signed off on are:

Student Mobile Phone Policy:



Students are required to hand their mobile phones in at the start of each day, as per school and Department of Education policy. We collect and store them securely throughout the day. They are returned at the end of each day.

Internet Policy: All students and parents/carers sign an online agreement permission form in line with the Department of Education Student Online Services Guidelines. We have filters, and students found deliberately breaking the rules will face bans, and /or limited access.

Dress Code Policy: Students are expected to wear the school uniform, and to dress appropriately for the weather conditions, or activities undertaken. Hoodies, jumpers, jackets, can only be worn if they are the same colour (navy blue) as the uniform, and without brand logos. Certain programs,



such as cooking, Design and Technology, and Workplace Learning require closed in footwear.

Positive Behaviour Support

The purpose of positive behaviour support at CCESC is to create and maintain a safe and supportive learning environment for all. We encourage positive attitudes through the explicit teaching and modelling of our core values, **achievement, independence, and respect**.

We aim to:

- Foster achievement, independence, and respect.
- Encourage the pursuit of personal goals.
- Support academic achievement.
- Promote social and civic responsibility.
- Maintain cultural harmony.
- Develop self-regulation, resilience and personal responsibility.

The school's positive behaviour support initiative includes strategies to:

- Maintain a positive school environment.
- Encourage positive behaviours and personal best.
- Have students take personal responsibility for their actions.



Students working



Market Day



Postal address

Please address **all** correspondence for CCESC to:

Cannington Community Education Support Centre
147 Wharf Street
CANNINGTON WA 6107

Psychologist

The school receives the services of a school psychologist, Mrs Tracey Creighton, for three days per week (Tuesday, Wednesday and Thursdays). Much of Mrs Creighton's time is spent assessing students' eligibility; however, she is available to discuss behaviour or mental health issues and can be contacted on 9351 2480.

Public Holidays 2025

New Year's Day	Wednesday 1 January
Australia Day	Sunday 26 January
Australia Day holiday	Monday 27 January
Labour Day	Monday 3 March
Good Friday	Friday 18 April
Easter Monday	Monday 21 April
ANZAC Day holiday	Friday 25 April
Western Australia Day	Monday 2 June
King's Birthday holiday	Monday 29 September
Christmas Day	Thursday 25 December
Boxing Day	Friday 26 December



Recess and lunchtime activities

Middle school: To help improve students' social skills and general engagement at school, staff supervise recreational programs. The community nurse runs a girls' club on a weekly basis.

Senior school: The gym at SSC is open at lunchtime for students to play ball games, including soccer and basketball. Students gather in friendship groups at various locations around the campus, including the Café and under the gazebos. Every day, students have the choice to participate in a lunchtime activity, where conversation, music and fun activities are on offer.

Reporting

Staff collect data relevant to the individual student's needs and use this data to create an Individual Education Plan (IEP). Standardised testing in Literacy and Numeracy also informs the IEPs. Education Planning Meetings are held for parents and carers of years 7-9 students at the beginning of each semester. Parents of students in years 10-12 attend Individual Transition Plan (ITP) sessions twice per year (Term 1 and Term 3). Student reports are sent out electronically via CONNECT to parent emails. IEP and ITP documents are uploaded to Connect Flexi classes.

Reporting nights are held at least twice a year, where staff are available to discuss student progress.

Regional Education Office

The school is part of the South Metropolitan Education Region. The Regional Office is at 184 Hampton Road, Beaconsfield ☎ 9336 9563.

School Board

The School Board membership consists of parents, community members and school staff, namely, Emma Blake (Chairperson / Parent), Jude Bridgland (Parent), Dr Paula Smith (Parent), Jenny Fuller (Community Member), Zena Gomes (Community Member), Angela Whittington (Deputy Principal), Tanya Buchan (MCS), and Andrew Wilson (Principal). These dedicated volunteers assist in establishing the school's strategic plans. The Board verifies financial planning and approves the annual charges and contributions. We currently have vacant positions, so if you are interested in being part of the School Board, please register your interest with our school office.

School Hours/Office Hours

SCHOOL HOURS

Middle School – Years 7-10

	Mon, Tues, Thurs, Fri	Wednesday
Start	8:40am	8.40am
Period 1	8:40am – 9:55am	8.40am-9.40am
Period 2	9:55am – 10:55am	9.40am-10.40am
Recess		
Period 3	11:20am – 12:20pm	11.05am-12.05pm
Period 4	12:20pm – 1:20pm	12.05pm – 1.05pm
Lunch		
Period 5	1:50pm – 2:50pm	1.35pm-2.35pm

- **Early finish on Wednesday – 2:35pm**

Senior School – Years 11-12

Start	8:50am
Zone 2	8:50am – 9:50am
Zone 3	9:50am – 10:50am
Recess	
Zone 4	11:10am – 12:10pm
Zone 5	12:10pm – 1:10pm
Lunch	
Zone 6	1:40pm – 2:20pm
Zone 7	2:20pm – 2:50pm

- **Early finish on Wednesday – 2:30pm**

OFFICE HOURS

Middle School – Years 7-10

Cannington Community College Site
147 Wharf Street, Cannington

8:00am – 3:30pm Monday to Friday

Corporate Services Officer: Mrs Sue Graham
☎ 9351 2480

Senior School – Years 11-12

Sevenoaks Senior College Site
275 Sevenoaks Street, Cannington

8:00am – 3:30pm Monday to Friday

Corporate Services Officer: Mrs Lisa Benstead
☎ 6235 7296



SmartRider cards

Transperth SmartRider cards are issued to new students when they start at CCESC, and to other students, for lost or replacement, as required.

Year 10 students transferring from middle to senior campus continue to use their CCESC SmartRiders until they complete school.

The benefit of this is, on their SmartRider, students will still be listed as Cannington Community ESC (less confusing for parents and students) and have their current photo and WA student number.

Please advise the school officer when the SmartRider expires (when a student turns 18 or continues to Pathways for a SBT) so that an extension of the expiry date can be arranged through Transperth.

Year 12 student SmartRiders usually expire 31 March of the following year.

If a SmartRider card is lost, please advise the school officer so that a replacement card can be ordered. Cost \$5.00 (photo included).

Staffing

Principal
Deputy Principals (2)
Manager of Corporate Services
Corporate Services Officers (3)
Student Services Manager
Student Services Coordinator
Workplace Learning Coordinators (2)
Aboriginal and Islander Education Officer (AIEO)
Chaplain
Teaching Staff (20)
Lead Education Assistants (2)
Education Assistants (45)
School Psychologist
Speech Pathologist
Occupational Therapist
IT Support – shared sites (2)

A detailed list is available on our website.

Stationery Lists

We encourage all students to bring the items listed below to class at the start of the year. Please check at the beginning of each term that your child has these items.

Please have all items labelled with your child's name (except tissue boxes)

Middle School – Years 7-10

No	Item
5	Blue biros
5	Red biros
10	Lead pencils (HB)
1	Pack colour pencils
1	Pack colour textas
2	Glue sticks 35g
1	Scissors
1	30cm wooden ruler
2	White eraser
1	Pencil sharpener
4	Large boxes tissues
1	Large pencil case

Senior School – Years 11-12

No	Item
2	Lead pencils (HB)
1	White eraser
1	Pencil sharpener
6	Red biros
6	Blue biros
1	Scissors - large
1	30 cm wooden ruler
2	Glue sticks 35g
1	Packet colour pencils
1	Small packet textas
4	Large boxes tissues
1	Large pencil case

All students are to provide their toiletries (roll-on deodorant, soap, comb, sanitary products, etc) in a carry bag.

Student Assistance Claim 2025

This payment is a WA government initiative to help parents and carers with the cost-of-living pressures associated with sending their children to school. They payment is not guaranteed every year. The second round of the payment is now open.

All West Australian students enrolled in K-12, with a valid WA student number (WASN), are eligible for this payment. Primary - \$125, Secondary - \$250. More information is available at wa.gov.au/servicewaapp.

You can submit a claim using the ServiceWA app, online claim at www.education.wa.edu.au/wasap/, or download and print the form.

All claims must be received by Friday 4 July 2025.



Student Free Days 2025

(School Development Days)

Term 1	Monday 3 February Tuesday 4 February
Term 2	Friday 30 May (Week 5)
Term 3	Monday 21 July
Term 4	Monday 13 October Friday 19 December

Student Support

We have a team of dedicated staff committed to providing support to students and families who are experiencing difficulties.

The team is made up of the student services manager, the student services coordinator, chaplain, psychologist, nurse and other staff as required.

They adopt a case management approach and look for community-based programs as well as helping students self-regulate their behaviour.

Term Dates 2025

Semester One	Term 1	Wednesday 5 February – Thursday 11 April
	Term 2	Tuesday 29 April – Friday 4 July
Semester Two	Term 3	Tuesday 22 July – Friday 26 September
	Term 4	Tuesday 14 October – Thursday 18 December

Therapy

The school purchases the services of an Occupational Therapist and Speech Pathologist from Indigo. NDIS service providers come into the school to work with students and staff. Contact your child's teacher to discuss the best ways to incorporate therapy services into the school program.

The school has a purpose-built sensory room which is for the use of students with sensory needs, as identified by their therapy provider.

Therapy - Student in-school sessions

Therapy is parent initiated via a Parent Therapy Request form. This needs to be completed before school can liaise with therapist service providers.

Once completed and approved, therapists then provide their registration, WWC and insurance documents and each therapist must complete a separate Therapy Service Schedule including 2 x school-based SMART (Specific, Measurable, Achievable, Realistic and Timely) goals, that are relevant and functional to the student IEP and ITP goals (not NDIS goals).

Once the documents and SMART goals have been approved, the therapist can then liaise with the teacher for suitable day and session times.

As many of our students have multiple therapists, teachers can specify days and times which suit the classroom and student's timetable.

As available space is limited on both campuses, therapy sessions should be classroom based, unless otherwise approved by school.

Travel Training

Independent students travel to and from school via Transperth bus or train. The school provides travel training education programs to assist students who wish to, and are capable of, travelling independently.

Please contact the school if you would like your child to receive help with using public transport.





Uniforms – Middle School

All students MUST wear the school uniform of the site they attend.

Middle School - Years 7-10 (Cannington Community College uniform)

Uniforms can only be purchased from Uniform Concepts, Willetton



CANNINGTON CC SHORT SLEEVE POLO



JUMPER CREW NECK



JACKET



MICRO FIBRE SHORTS



SKIRT WITH INBUILT SHORTS



MICRO FIBRE TRACKPANTS



FACTION POLO



Cannington Community College

and




Cannington Community Education Support Centre

2025 UNIFORM PRICE LIST & ORDER FORM

Student Name:	
Year:	
Parent / Guardian Name:	
Phone Number - Mobile:	
E-mail Address:	

UNISEX UNIFORMS	3XS	2XS	S	M	L	XL	2XL	3XL	4XL	QTY	PRICE*	TOTAL \$
Short Sleeve Polo shirt											\$34.50	
Jumper - Crew neck											\$46.00	
Jacket - Microfibre											\$65.00	
Shorts - Microfibre											\$35.00	
Skirt - with inbuilt shorts											\$34.00	
Trackpants - Microfibre											\$39.00	
Faction Polo											\$34.50	
GRAND TOTAL												\$

* All prices are subject to change without notice ** A 50% surcharge will be added to all made to measure garments

PAYMENT TYPE:	\$				DINERS, AMEX & CHEQUES ARE NOT ACCEPTABLE
CARD NUMBER (16 DIGITS):					
EXPIRY DATE:	3 DIGIT CCV NUMBER:				
CARD HOLDER FULL NAME:					
CARD HOLDER SIGNATURE:					

ADDRESS: 30 Kembla Way, Willetton, WA 6155 TEL: 9270 4469

EMAIL: willetton@uc.nellgray.com.au WEBSITE: nellgray.com.au

OPEN: Mondays - Friday 9am - 5pm (Thursday 9pm - 1pm)



Uniforms – Senior School

Senior School - Years 11-12 (Sevenoaks Senior College uniform)

Uniforms can only be purchased from Uniform Concepts, Willetton



UNIFORMCONCEPTS

Supplying Uniforms to Sevenoaks Senior College and Cannington Community Education Support Centre (Senior School)

Address: 30 Kembla Way, Willetton, WA 6155 **Tel:** 9270 4669

Email: willetton@uc.nellgray.com.au **Website:** nellgray.com.au

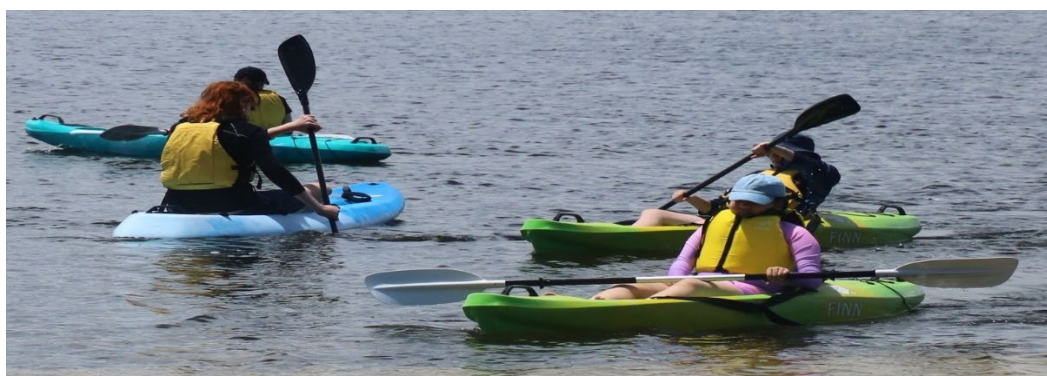
Open: Monday - Friday 9am - 5pm (Thursday 6pm) & Saturday 9am - 1pm

All Students

The Education Support Centre, CCC, and SSC have an expectation that all students wear the uniform of the campus they attend, to include a polo shirt, jacket or jumper. It is also a safety requirement to identify students on school grounds. **Hoodies, jumpers, and jackets with brand logos are not permitted to be worn.**

Footwear: Joggers, or black shoes (must be enclosed)
Protective footwear is essential in some subjects.

- Students should bring a change of clothes for sport.
- Jewellery is to be kept to a minimum. Students may be required to remove jewellery where safety is an issue.
- For interschool activities, students will be advised about what they will need to wear.



Yr 10 Transition excursion



Unique Student Identifier (USI)

A USI is required for all students in years 10, 11 and 12. It is a combination of ten letters and numbers and is different for each student. A USI is required for all students undertaking nationally recognised training to receive a qualification or record of attainment. Students will generally apply for a USI in year 10.

Once a USI has been allocated, it cannot be changed and stays with the person for life.

A USI is free and easy to create using a birth certificate and/or Medicare card as identification and can be obtained from the USI registry or online at <http://www.usi.gov.au>



Athletics carnival

Valuables

Students must not bring valuable items to school. The school does not have lockers for students to use and cannot take responsibility for lost or misplaced items.

Parents can contact the school if their child is bringing money to the school, and they are concerned. Lost property is kept in classrooms or the front office.

Please ensure clothing and items are labelled with your child's name.

Values

At CCESC, we have identified **Achievement**, **Independence**, and **Respect** as our core values.

Achievement is about doing your best and being your best (work hard, and you can succeed) and recognising that we are all good at something.

Independence is about being responsible, taking control, setting goals, and doing it by yourself if you can.

Respect is about showing you care for yourself, your friends, your family, your community, your culture and your world. You treat others as you would like to be treated.

The motto **Learning for Life** reflects our belief that learning occurs throughout life and that our students require a specialised functional curriculum that prepares them for life.

CCESC and its partner schools, Cannington Community College, and Sevenoaks Senior College, aim to foster a cooperative and supportive learning environment that is inclusive and responsive to the needs of all students. The development of independence, a robust sense of self-worth and respect for others are key objectives for our students.

Workplace Learning

The Workplace Learning Program (WPL) begins in year 10 as Work Readiness and then continues in year 11 and 12 as Authority Developed Workplace Learning (ADWPL). WPL is run on an individual student basis, and we endeavour to match students with an industry that holds their interest. Students also work in our Mini Woollies CANDO store.

Students are supported by a Job Coach, and are required to complete 55 hours, a logbook and skills journal per placement, to achieve one unit with a maximum of four units, in two years.

Students travel to work placements each week using public transport and are required to have their own SmartRider, **with sufficient funds available**, to purchase their ticket.

While in the workplace, students wear clothes other than school uniform, as they become part of the workforce, rather than school students. Parents receive documentation prior to each placement detailing all requirements.

Cannington Community College Site Map

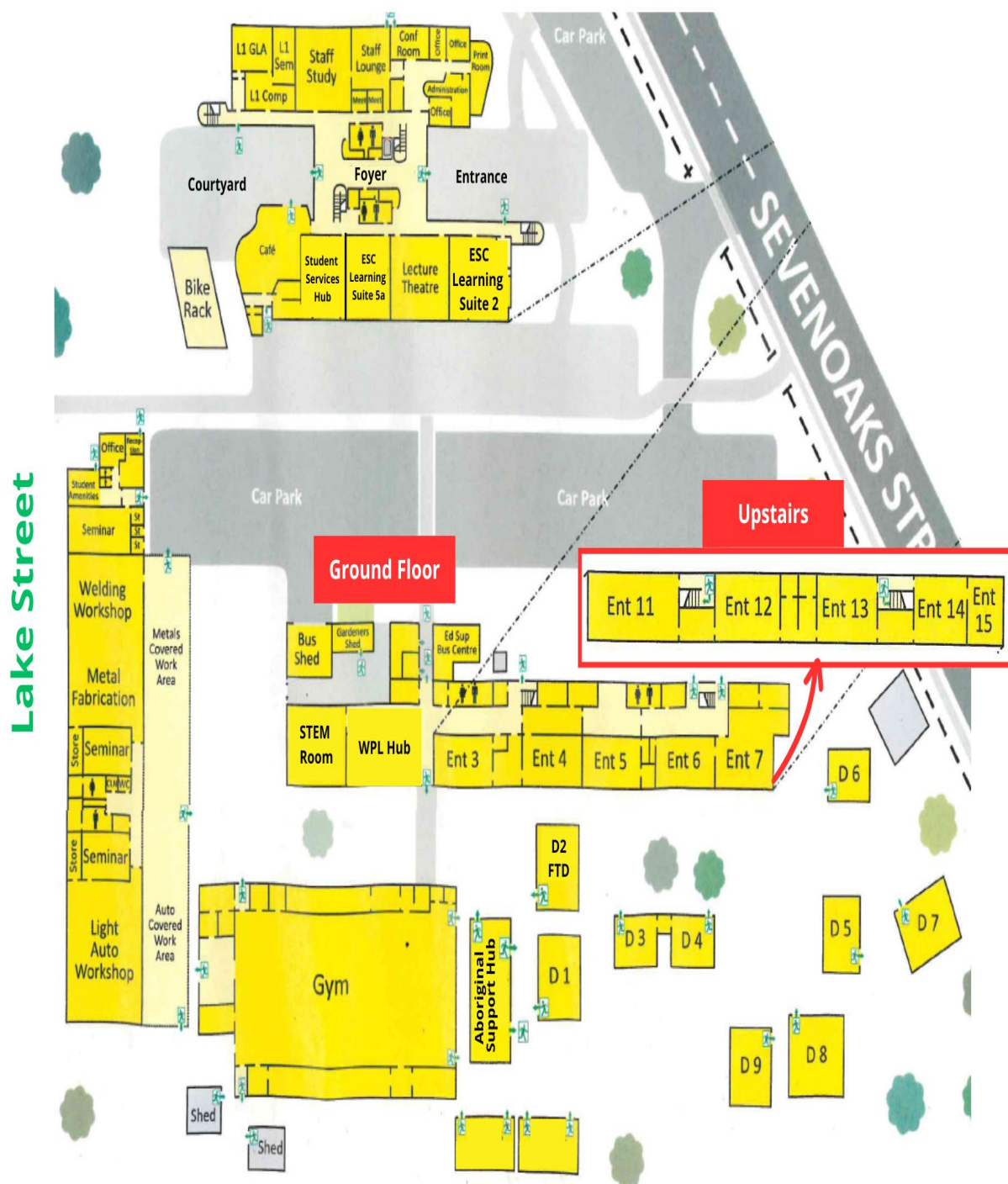
CCESC Middle school is situated at Cannington Community College site – 147 Wharf Street, Cannington



Sevenoaks Senior College Site Map

CCESC Senior school is situated at the Sevenoaks Senior College site –
275 Sevenoaks Street, Cannington

This map is an indication only and will be updated to show the new boom gates across each carpark entrance, the closed north gate, and the changes along Sevenoaks Street to show the new Cannington bus transfer station, and the Cannington Train Station.





School Business Plan 2019 - 2022



Cannington Community Education Support Centre

Ethos: Our motto, Learning for Life, reflects our beliefs that learning occurs throughout life and that our students require a specialised curriculum that prepares them for life.

Our Vision

Empowering every student to reach their potential.

Our Purpose

To provide a range of programs for students with special needs that maximise their ability to independently take their place in the wider community by meeting their individual intellectual, social, emotional, sensory and physical needs.

#CanDo

Our Core Values

Achievement
Independence
Respect

School Priorities

ACHIEVEMENT - INDEPENDENCE - RESPECT

#C

Curriculum

Literacy
Numeracy
Personal and Social
Capabilities - Mental
Health and Wellbeing

A

Aboriginal Culture

Aboriginal
Cultural Standards
Framework

N

Networks

Parent and
Community
Partnerships
NDIS
Therapy
IEP's/RTP

D

Directions

Transition Plans
VET/WPL
Senior Curriculum
Pathways

O

Organisational

Governance
Finance Committee
School Board
KOWS
Performance
Management

School Partnerships

See our website for more...



[School Bus Services](#)



[Workpower](#)



[BIZLINK](#)



[MusicRocks Australia](#)